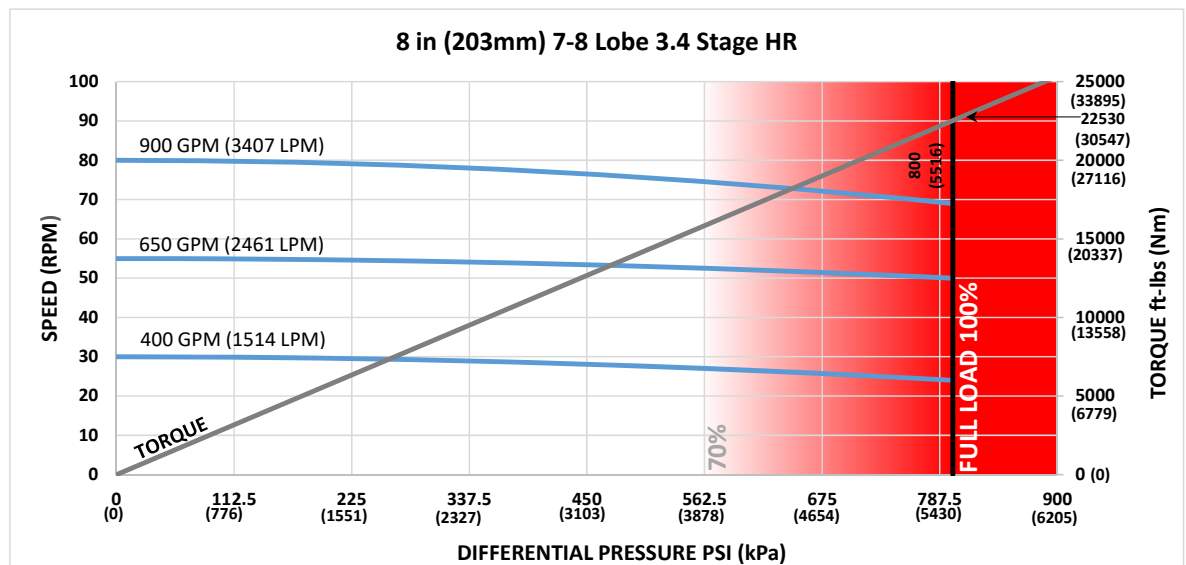


<b>Bit Size Range</b>	9-7/8 - 12-1/4 in	251 - 311 mm
<b>Bit Box Connection</b>	6-5/8 REGULAR	
<b>Dynamic Bearing Load On/Off Bottom</b>	145951 lbf	64900 daN
<b>Static Bearing Load On/Off Bottom</b>	534312 lbf	237700 daN
<b>Max. Overpull (For Re-run)</b>	542500 lbf	241300 daN
<b>Absolute Overpull</b>	904100 lbf	402200 daN
<b>Stab/Thread Protector Makeup Torque</b>	21000 ft-lbs	28500 Nm
<b>A = Bit to Stabilizer (Centre)</b>	23.56 in	0.6 m
<b>C = Overall (With Dump Sub)</b>	440.4 in	11.19 m
<b>Weight</b>	4520 lb	2050 kg



Possible damage may occur when motor is run higher than 70% of Maximum Differential Pressure.

<b>Lobe Configuration</b>	7-8 Lobe 3.4 Stage HR	
<b>Displacement (No Load)</b>	0.09 rev/gal	0.02 rev/l
<b>Max. Differential (Full Load)</b>	800 psi	5516 kPa
<b>Max. Torque</b>	22530 ft-lbs	30547 Nm
<b>Max. Power</b>	296 HP	221 kW

<b>Flow Rate</b>	<b>Speed</b>	
<b>GPM</b>	<b>LPM</b>	<b>RPM</b>
400	1514	24 - 30
650	2461	50 - 55
900	3407	69 - 80

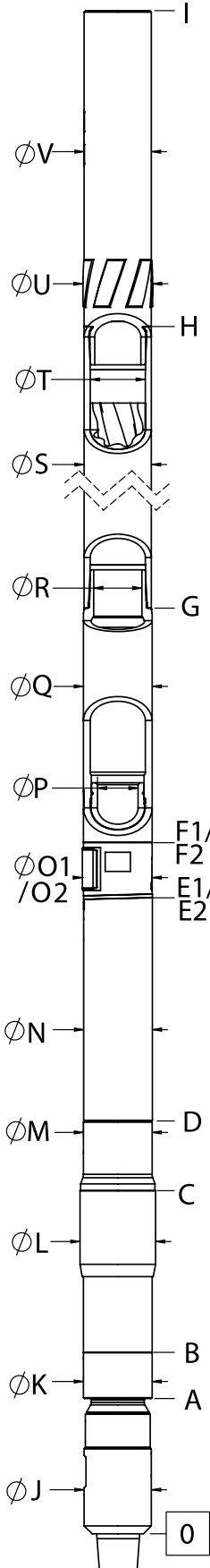
This information is for reference only.

RS Motors are available with Integral Blade Bearing Housings or Screw-On Style Stabilizers.

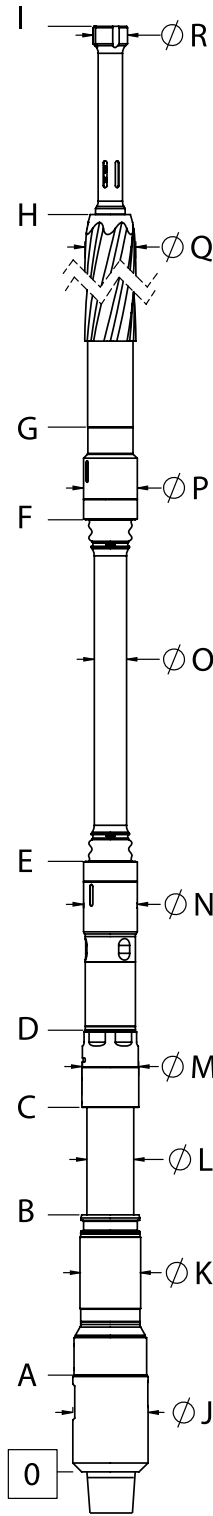
Contact your local DYNOMAX office for Stabilizer Sizes and Availability.

**FISHING DIMENSIONS**

USC - IMPERIAL (Lengths, Diameters = in)  
SI - METRIC (Lengths = m, Diameters = mm)



EXTERNALS		USC	SI
LOWER HSG FLOW REST.	A	14.6	0.37
BEARING HOUSING START	B	21.1	0.54
STABILIZER SHOULDER	C	42.1	1.07
BEARING HOUSING END	D	50.3	1.28
BIT TO BEND (ADJUSTABLE)	E1	74.9	1.90
ADAPTOR HOUSING (ADJUSTABLE)	F1	81.4	2.07
BIT TO BEND (FIXED)	E2	60.0	1.52
ADAPTOR HSG (FIXED)	F2	81.3	2.07
STATOR START	G	102.9	2.61
STATOR END	H	402.9	10.23
OVERALL LENGTH	I	440.4	11.19
BIT BOX Ø	J	8.00	203.2
LOWER HOUSING FLOW RESTRICTOR Ø	K	8.25	209.6
THREAD PROTECTOR Ø	L	9.00	228.6
BEARING HOUSING Ø	M	8.25	209.6
KICK OR FIXED HSG Ø	N	8.00	203.2
KICK PAD Ø (ADJUSTABLE)	O1	8.50	215.9
KICK PAD Ø (FIXED)	O2	8.38	212.9
ADJ MANDREL PIN Ø	P	4.81	122.2
ADAPTOR HOUSING Ø	Q	8.00	203.2
ADAPTOR HOUSING PIN Ø	R	5.65	143.5
STATOR TUBE OUTER Ø	S	8.00	203.2
STATOR TUBE INNER Ø	T	6.25	158.8
ROTOR CATCH SUB BLADE Ø	U	8.25	209.6
ROTOR CATCH Ø	V	8.00	203.2



INTERNALS		USC	SI
BIT BOX	A	9.1	0.23
LOWER SHAFT FLOW RESTRICTOR DIAMETER	B	26.5	0.67
COMPRESSION NUT	C	38.8	0.99
BEARING ASSEMBLY ADAPTOR	D	47.8	1.21
BAA ADAPTOR CAP	E	63.9	1.62
ROTOR ADAPTOR CAP	F	94.0	2.39
ROTOR START	G	102.8	2.61
ROTOR	H	395.8	10.05
CATCH STEM	I	411.8	10.46
BIT BOX Ø	J	8.00	203.2
FLOW RESTRICTOR Ø	K	6.00	152.4
MANDREL Ø	L	4.85	123.2
COMPRESSION NUT Ø	M	5.83	148.1
BEARING ASSEMBLY ADAPTOR Ø	N	5.81	147.6
DRIVESHAFT Ø	O	3.38	85.9
ROTOR ADAPTOR Ø	P	5.81	147.6
ROTOR MAJOR Ø	Q	5.31	134.9
ROTOR CATCH HEAD Ø	R	4.38	111.3

This information is for reference only.

Rotor Catch and Rotor Catch Float Sub Lengths may vary based on configuration, and use of Dump Subs or combination Rotor Catch and Float Housings.

If any additional information is required, please contact your local DYNOMAX office.