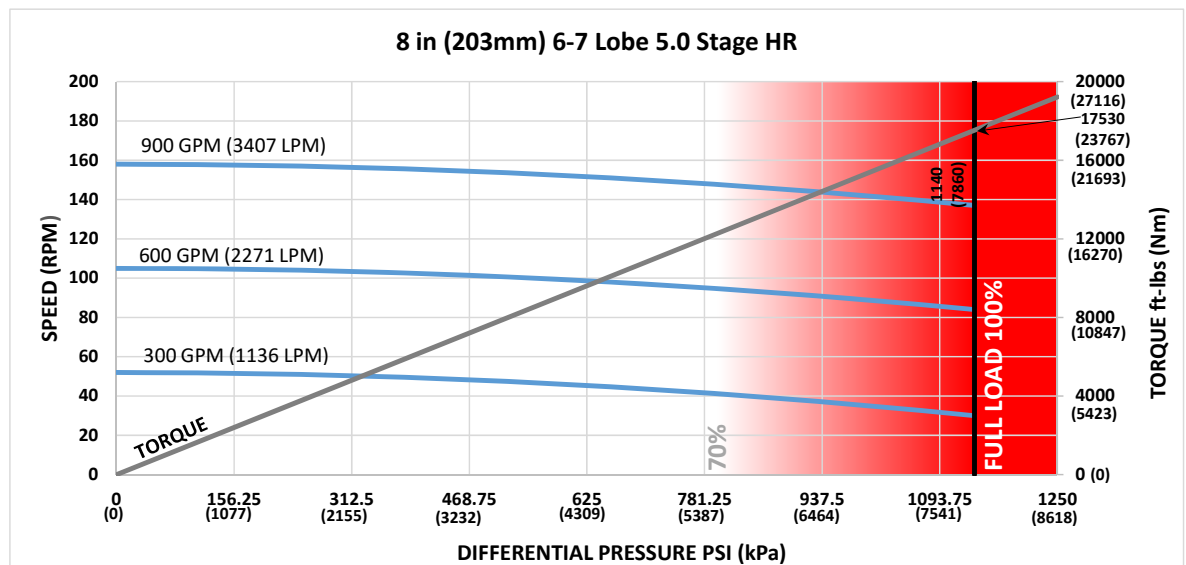


Bit Size Range	9-7/8 - 12-1/4 in	251 - 311 mm
Bit Box Connection	6-5/8 REGULAR	
Dynamic Bearing Load On/Off Bottom	145951 lbf	64900 daN
Static Bearing Load On/Off Bottom	534312 lbf	237700 daN
Max. Overpull (For Re-run)	542500 lbf	241300 daN
Absolute Overpull	904100 lbf	402200 daN
Stab/Thread Protector Makeup Torque	21000 ft-lbs	28500 Nm
A = Bit to Stabilizer (Centre)	23.56 in	0.6 m
C = Overall (With Dump Sub)	390.4 in	9.92 m
Weight	3962 lb	1797 kg



Possible damage may occur when motor is run higher than 70% of Maximum Differential Pressure.

Lobe Configuration	6-7 Lobe 5.0 Stage HR	
Displacement (No Load)	0.18 rev/gal	0.05 rev/l
Max. Differential (Full Load)	1140 psi	7860 kPa
Max. Torque	17530 ft-lbs	23767 Nm
Max. Power	457 HP	341 kW

Flow Rate	Speed	
GPM	LPM	RPM
300	1136	30 - 52
600	2271	84 - 105
900	3407	137 - 158

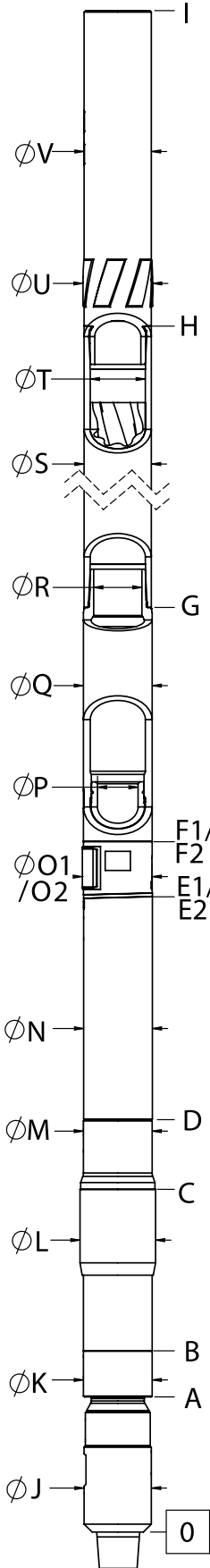
This information is for reference only.

RS Motors are available with Integral Blade Bearing Housings or Screw-On Style Stabilizers.

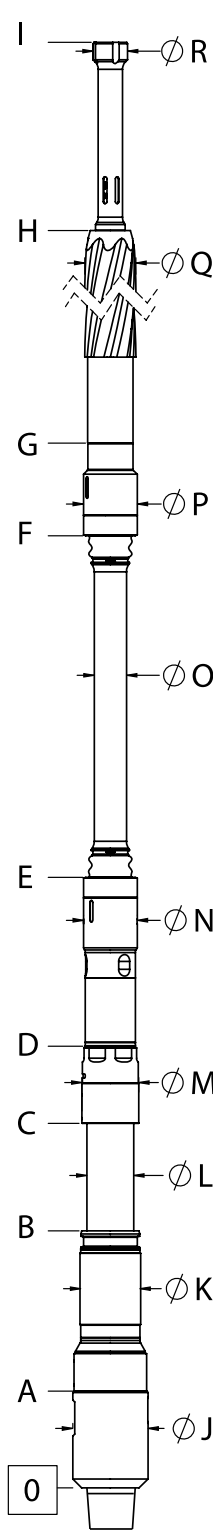
Contact your local DYNOMAX office for Stabilizer Sizes and Availability.

FISHING DIMENSIONS

USC - IMPERIAL (Lengths, Diameters = in)
SI - METRIC (Lengths = m, Diameters = mm)



EXTERNALS		USC	SI
LOWER HSG FLOW REST.	A	14.6	0.37
BEARING HOUSING START	B	21.1	0.54
STABILIZER SHOULDER	C	42.1	1.07
BEARING HOUSING END	D	50.3	1.28
BIT TO BEND (ADJUSTABLE)	E1	74.9	1.90
ADAPTOR HOUSING (ADJUSTABLE)	F1	81.4	2.07
BIT TO BEND (FIXED)	E2	60.0	1.52
ADAPTOR HSG (FIXED)	F2	81.3	2.07
STATOR START	G	102.9	2.61
STATOR END	H	352.9	8.96
OVERALL LENGTH	I	390.4	9.92
BIT BOX Ø	J	8.00	203.2
LOWER HOUSING FLOW RESTRICTOR Ø	K	8.25	209.6
THREAD PROTECTOR Ø	L	9.00	228.6
BEARING HOUSING Ø	M	8.25	209.6
KICK OR FIXED HSG Ø	N	8.00	203.2
KICK PAD Ø (ADJUSTABLE)	O1	8.50	215.9
KICK PAD Ø (FIXED)	O2	8.38	212.9
ADJ MANDREL PIN Ø	P	4.81	122.2
ADAPTOR HOUSING Ø	Q	8.00	203.2
ADAPTOR HOUSING PIN Ø	R	5.65	143.5
STATOR TUBE OUTER Ø	S	8.00	203.2
STATOR TUBE INNER Ø	T	6.25	158.8
ROTOR CATCH SUB BLADE Ø	U	8.25	209.6
ROTOR CATCH Ø	V	8.00	203.2



INTERNALS		USC	SI
BIT BOX	A	9.1	0.23
LOWER SHAFT FLOW RESTRICTOR DIAMETER	B	26.5	0.67
COMPRESSION NUT	C	38.8	0.99
BEARING ASSEMBLY ADAPTOR	D	47.8	1.21
BAA ADAPTOR CAP	E	63.9	1.62
ROTOR ADAPTOR CAP	F	94.0	2.39
ROTOR START	G	102.8	2.61
ROTOR	H	346.8	8.81
CATCH STEM	I	362.8	9.22
BIT BOX Ø	J	8.00	203.2
FLOW RESTRICTOR Ø	K	6.00	152.4
MANDREL Ø	L	4.85	123.2
COMPRESSION NUT Ø	M	5.83	148.1
BEARING ASSEMBLY ADAPTOR Ø	N	5.81	147.6
DRIVESHAFT Ø	O	3.38	85.9
ROTOR ADAPTOR Ø	P	5.81	147.6
ROTOR MAJOR Ø	Q	4.96	126.0
ROTOR CATCH HEAD Ø	R	4.38	111.3

This information is for reference only.
Rotor Catch and Rotor Catch Float Sub Lengths may vary based on configuration, and use of Dump Subs or combination Rotor Catch and Float Housings.
If any additional information is required, please contact your local DYNOMAX office.